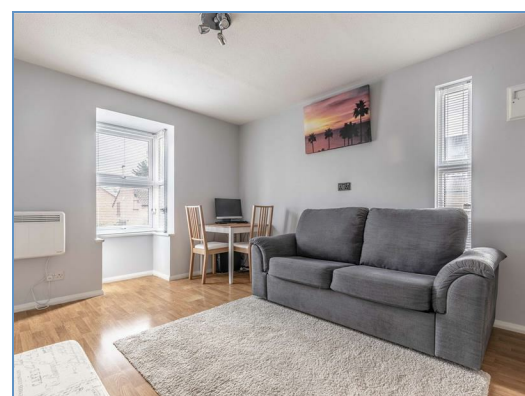
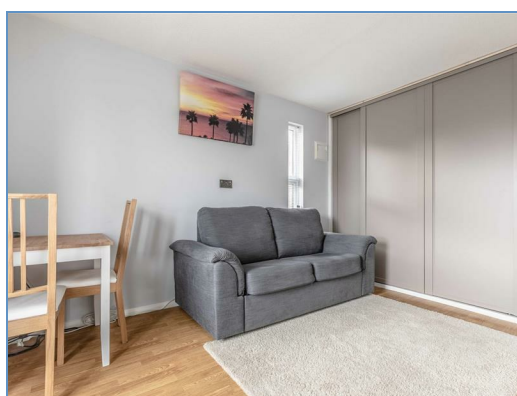
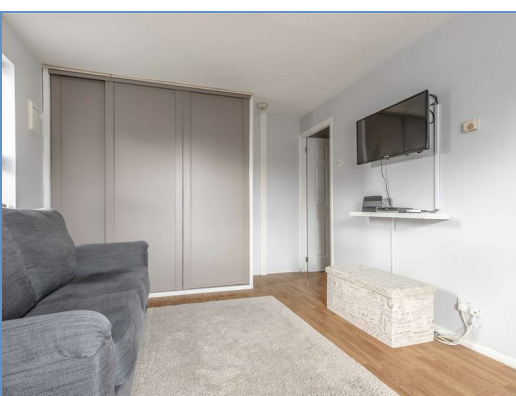




**Flat 6 23 Holmlea Road, Datchet, Berkshire, SL3 9HG**  
**£160,000**

Offered to the market is this first floor studio apartment being ideally located in Datchet village being close to great amenities and transport links. The property comprises a lounge/ bedroom with fitted storage, separate kitchen and modern bathroom. The home also boasts having a long lease, having allocated parking and being sold with NO ONWARD CHAIN!



Entrance

Through the main communal door with intercom entry system, stairs rising to the first floor.

Living room / Bedroom

A bright room being double aspect with bay style window to the front and side aspects, fitted wardrobes with sliding doors, laminate wood effect flooring, TV, telephone and power points.

Kitchen

A fitted kitchen with a range of eye and base level kitchen units with a complimentary quartz work surface, inset sink with drainer, space for freestanding appliances including fridge/freezer, washing machine and cooker, wood effect flooring, tiled splash backs, extractor fan and low level UPVC window over the side aspect.

Bathroom

A three piece white bathroom suite comprising of a panel enclosed bath with a shower and glass screen above, vanity wash hand basin with cupboards below, low level W.C, mirrored medicine cabinet, extractor fan, tiled walls and flooring.

Lease Information

Lease: Approx 960 years remaining  
Service charge: £73pcm  
Ground rent: £100pa

Legal Note

\*\*Although these particulars are thought to be materially correct, their accuracy cannot be guaranteed and they do not form part of any contract. \*\*

